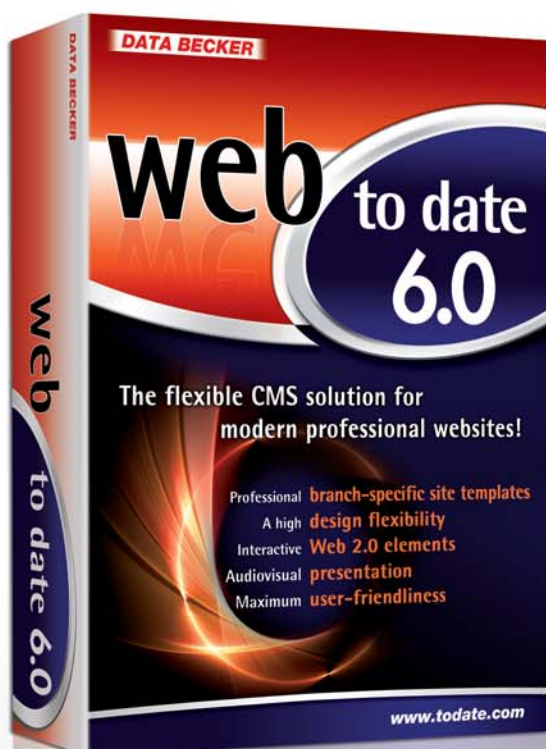


An easy way to your professional homepage!

NEW:

More than 1 000 design templates
Optimised picture presentation
Flexible page layouts

The new **web to date 6.0** will help you to build an impressive and flexible website within a very short time. Organise your content on a modular basis, publish it on the internet and keep it up to date easily.



- A fully developed software solution for all business sectors
- Simple website creation and maintenance without programming skills
- Award-winning software sold over 100 000 times



Demo and Downloads: www.todate.com

DATA BECKER

web to date 6.0: a powerful CMS solution for the easy implementation of your professional website!

web to date 6.0 enables you to create an appealing internet presentation for your company within the shortest time possible. Various site templates for different branches and industries and more than 1 000 refreshing web designs can be used as they are or customised without any HTML skills to satisfy your personal needs and preferences. Insert texts, pictures, tables, videos, etc. with just a few clicks and make them available to the broad internet community in your forums, galleries, podcasts, timelines and weblogs. web to date 6.0 supports integration of Flash videos and interactive Web 2.0 elements as well as Google Maps and sitemaps. Your brand new, low-maintenance, search engine optimised homepage will give you a clear advantage over your competitors.

web to date 6.0: flexible content organisation, modern design!

The navigation bar is created automatically

The Factbox gives your homepage a Web 2.0 look and feel

The Light box allows for attractive presentation of your pictures on the internet

Texts can be displayed using the one-, two- or three-column layouts

The color palette can be modified, pictures and logos can be uploaded with just a few clicks

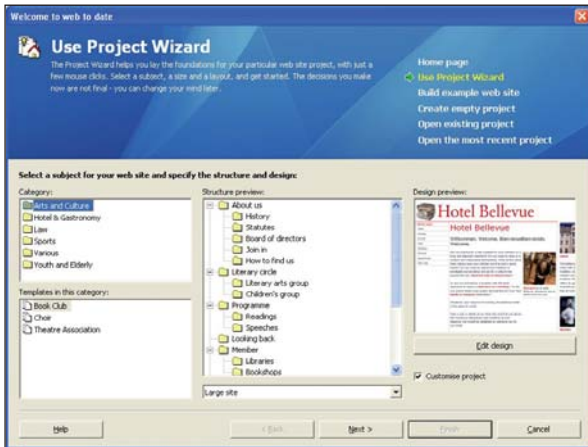
External HTML and PHP code (e.g. the current weather report) is integrated in your homepage easily with the help of the new external code module

The new Video Chart module allows creating a list of Flash videos

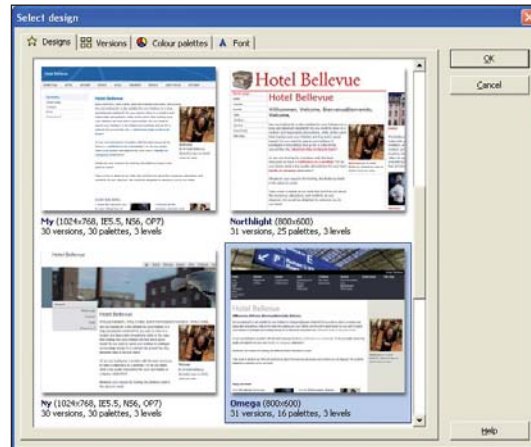
The Poll module provides a convenient way to carry out surveys and evaluate the results on your website

What would your website look like with a different design and new colors? You can test it with web to date 6.0 and customise the look and feel any-time without touching the site contents.

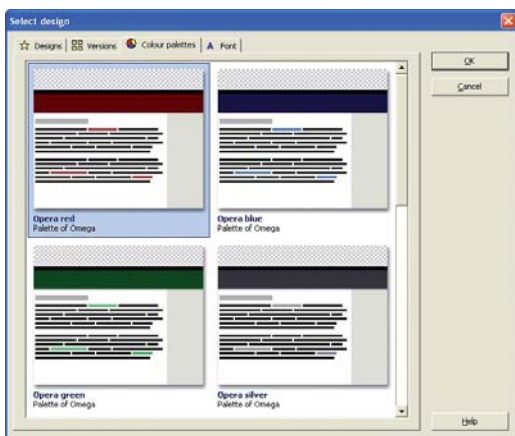
Just as easy as that: 4 steps to define the structure of your website!



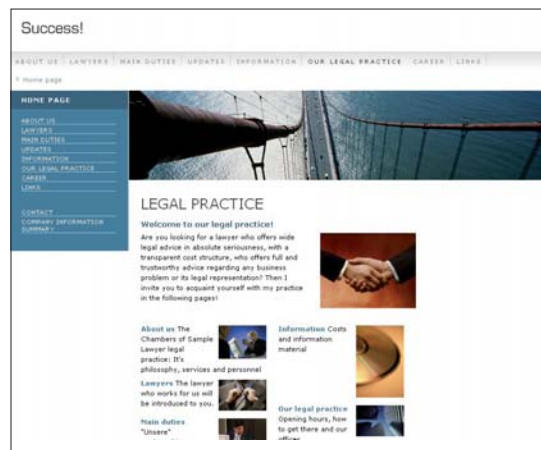
1. Use the Site wizard to choose the category which corresponds to your branch of industry and select a suitable template in that category (The template includes complete sample pages and contents)



2. Choose from more than 1 000 stylish web design with sidebars and other modern elements



3. Define a harmonious, well-balanced color palette and an appropriate font type for your website

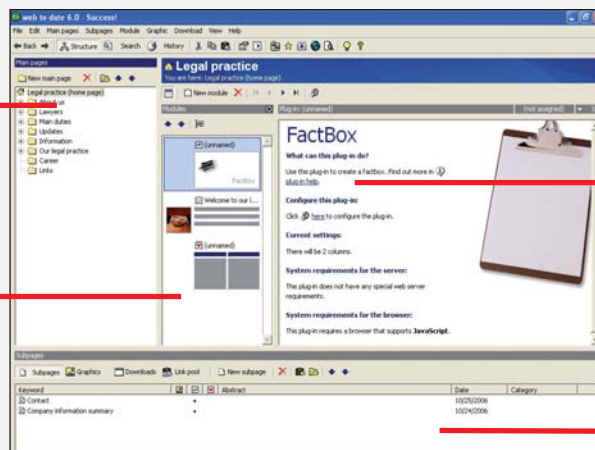


4. Customise the pre-defined site structure, replace the sample content with your own and upload the site to the web server

A clean and intuitive interface for your project!

Define the structure and the navigation tree of your homepage by creating main pages, which doesn't require more than several clicks. Changing the structure is just as easy

With just a mouse click you can insert various modules in every page combining them arbitrarily to ensure a perfect presentation of your texts, pictures, tables, etc



In the module editor you can see the overview of the chosen module. This is where you make changes to the page, type in or edit texts and upload pictures.

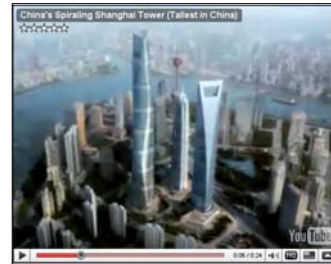
The bottom section underneath the list of main pages displays the subpages, pictures and links embedded in the selected main page.

web to date 6.0: function overview

- Get started right away – use site templates available for almost every industry
- Adjust the colors, design and fonts to your corporate design
- Create galleries, forms, guestbooks, etc. with a mouse click
- Insert texts, pictures, logos, price lists with just a few clicks
- Embed external code (driving directions, weather report, etc.) offhand
- Create, upload and manage your site without HTML skills
- Build printer-friendly, barrier-free and mobile websites
- Set up chat rooms for up to 32 users, Live Support and FAQ sections
- Embed Podcasts and RSS readers, create your own RSS feeds
- Draw attention to special offers and campaigns through event animation
- Set up data exchange with your partners with the help of the file sharing module
- Schedule the time-controlled visibility of pages and paragraphs and synchronise them with MS Word documents
- Create weblogs, votings and password-protected areas
- Reuse projects from earlier versions of web to date (2.0/3.0/4.0/5.0) easily

Innovative features of web to date 6.0

- More than 1 000 web design variants for the modern look and feel
- Web 2.0 feedback functions to provide direct customer communication
- Attractive visualisation of your company's history as a scrollable timeline
- Presentation of your offers and events as Flash videos in the true Web 2.0 design
- Automatic generation of sitemaps for effective search engine optimisation
- Easy creation of „Welcome Pages“ (language selection, etc.) with Flash elements
- Integration of Google Maps, YouTube videos and other Web 2.0 features



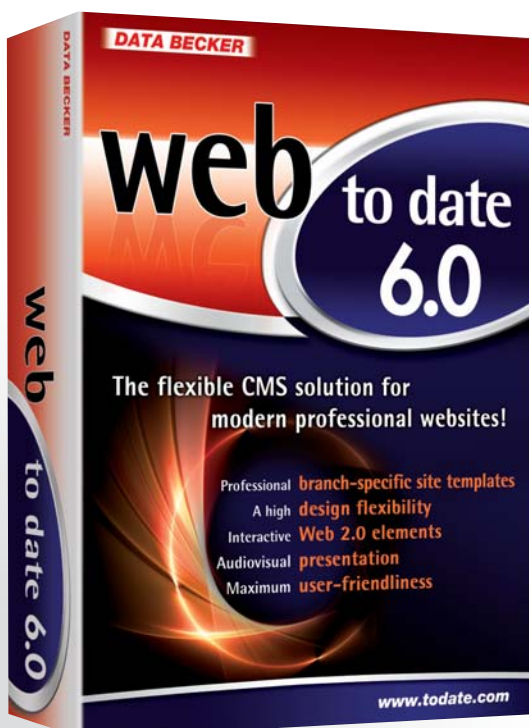
NEW: the YouTube module enables you to integrate YouTube videos in your website.



NEW: The Timeline module allows for a clearly-arranged presentation of your company's history or the course of a journey.



NEW: Embedding Google Maps makes it easier for your customers to find the way to your office



Buy online € **166,70**